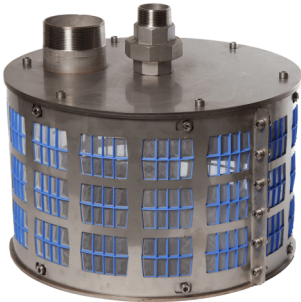


RF400AR Self-cleaning Filter

From £1,911.00 GBP



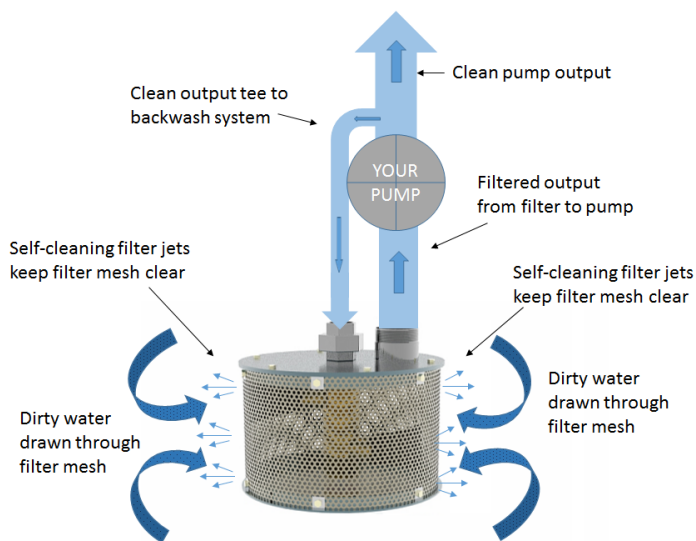
The RF400AR self-cleaning filter is for use on the suction side of surface mounted pumps. The RF400AR is an extremely tough stainless steel basket filter that protects pumps and other connected equipment from blocking and blinding. It can be fitted with tough nylon filter mesh or stainless steel screens and can filter from 60 microns to 6mm. The RF400AR can handle up to 1000 litres per minute. The patented self-cleaning mechanism in the filter provides a continuous backwash keeping the filter mesh free of weed and debris. The filter self-cleans whenever your pump is in operation and provides a very efficient low maintenance solution to pumping water contaminated with suspended solids.

Key Features

- Strong nylon filter mesh or stainless steel filter mesh
- Filters from 6 mm down to 60 microns
- High reliability, easy to use and install
- Works with most centrifugal and progressive cavity pumps
- 60 cubic metres per hour maximum flow
- Reduced capital, installation and maintenance costs
- All Stainless Steel construction
- Protects pumps and other equipment
- For use in dirty water.

Description

RF400AR Self-cleaning Filters and Strainers



V@ÄÜ[q !-r • @ÜØ €€ÜÄ&

one of our most popular products. It is tough, versatile, easy to install and requires minimal maintenance. It is used across a wide range of industries for all kinds of dirty water filtration. These filters will filter up to 1000 litres of dirty water per minute.

RF400AR self-cleaning intake strainers provide protection against blockage for surface mounted pumps and other connected equipment. These filters can be fitted with coarse stainless steel filter mesh (1mm - 6mm) or finer sintered stainless steel or nylon mesh screens (50 micron - 315 micron).

Their stainless steel filter cages make them very strong, long-lasting, low maintenance strainers, requiring only the occasional jet wash or filter change to keep them running.

All our filters use a proportion of your pump's output to supply a feed to an internal backwashing rotor. This supply is taken off the already filtered pump output. The twin jets of the cleaning rotor inside the filter rotate at about 60 rpm clearing the whole screen every ½ second. As the cleaning mechanism is on the filtered side of the screen debris in the water will not obstruct the mechanism.

Approximately 10 -20% of the pump output is required to supply the cleaning rotor.

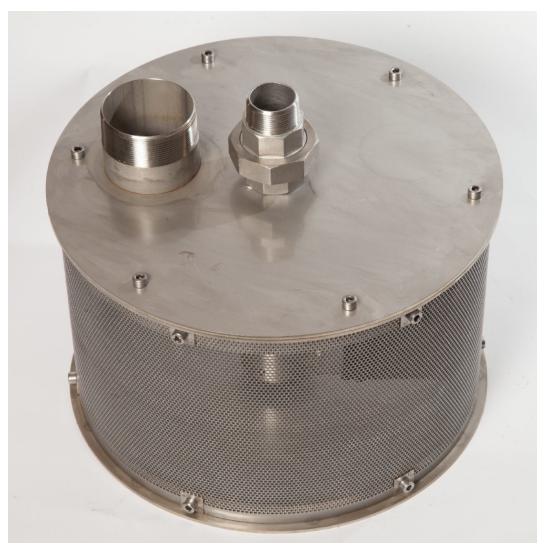
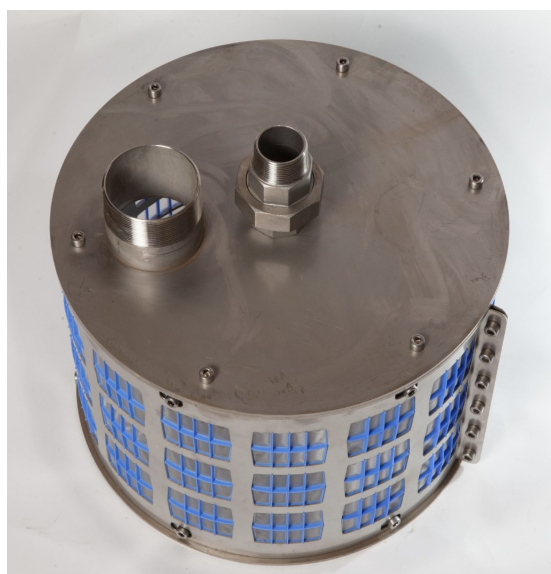
For a larger capacities our [RF600AR self-cleaning filters](#) deliver up to 4,500 litres per minute, and we can [custom build](#) larger self-cleaning filters to your specifications. All our filters and strainers use the same patented technology, providing efficient self-cleaning backwash to keep their filter mesh clear for a range of flow rates.

Alternatively, where your pump output is variable or your pump has a variable speed drive you may wish to use an [RF400AR-E Strainer](#) with its own backwash pump.

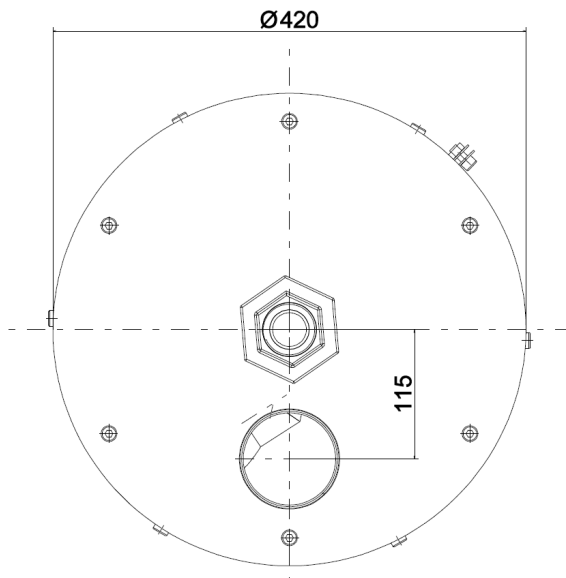
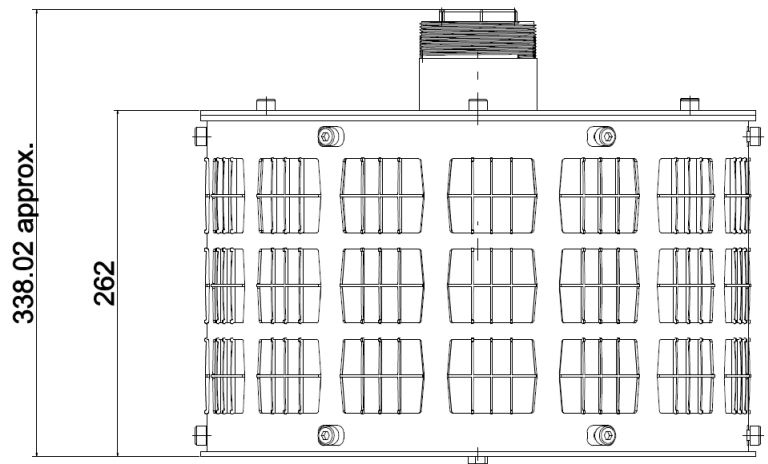
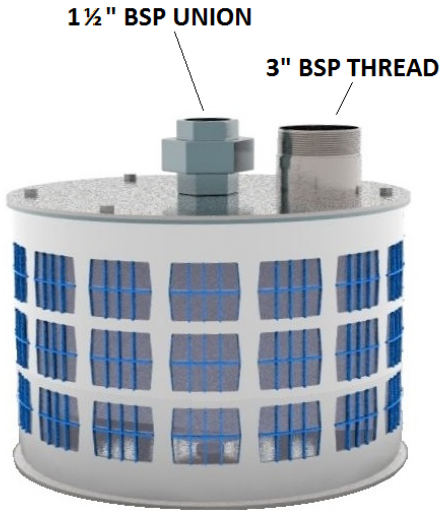
Models & Specification

RF400AR Self-cleaning Intake Filters and Strainers

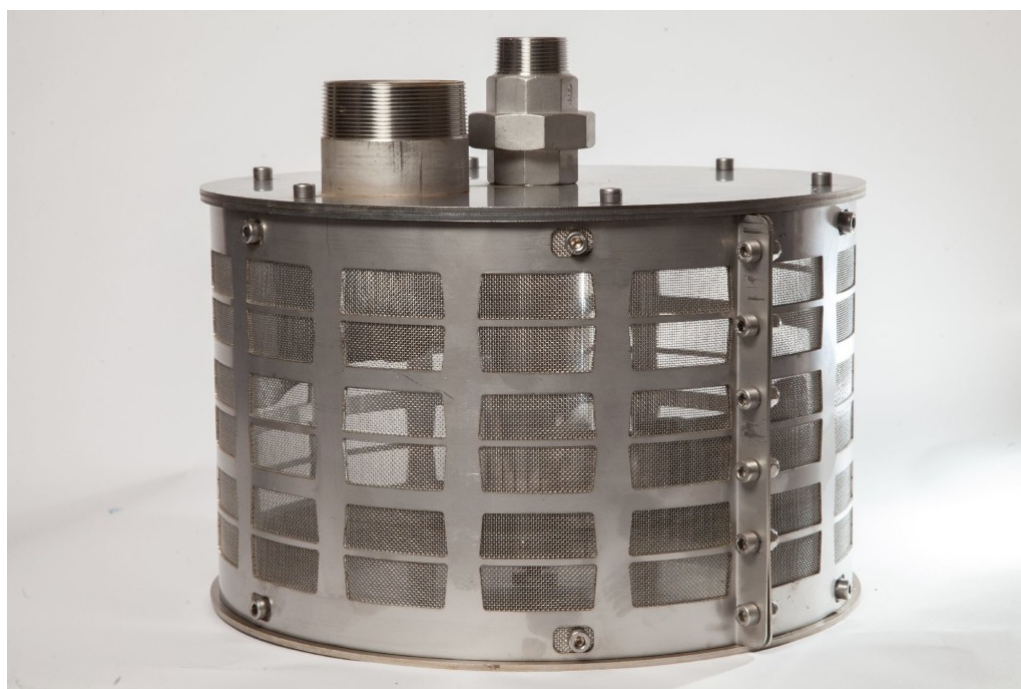
General Characteristics	RF400R
Water supply to cleaning rotor	Tapped from outlet of main pump
Maximum pump output (m ³ /hour)	60
Standard coarse screen mesh aperture	3mm or 6mm perforated 304 stainless steel 1mm or 2mm woven 316 stainless steel mesh
Standard fine screen mesh aperture	60, 115 or 315 micron bias cut nylon mesh 50, 115 or 300 micron sintered stainless steel top mesh
Dimensions (diameter x height) (mm)	420 x 354
Weight (kg)	19
Suction pipe connection	3 "
Return pipe connection	1.5"
Operating Pressure (backwash)	0.3 bar – 0.5 bar backwash
Proportion of pump output back-washing (m ³ /hour)	6.0 – 9.0



RF400AR Dimensions



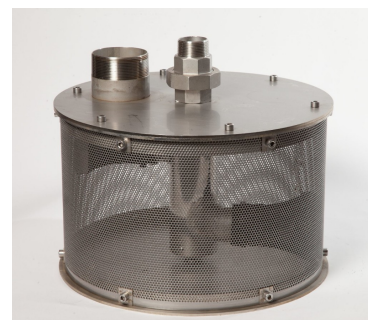
RF400AR Strainer Construction



Component	Material
Filter cage and lid	304 Stainless Steel
Central turbine	304 Stainless Steel
Jets	Food grade natural rubber
Bearings	Acetal copolymer
Standard coarse screen	3mm or 6mm perforated 304 stainless steel 1mm or 2mm woven 316 stainless steel mesh
Standard fine screen	50, 115 or 300 micron sintered stainless steel top mesh 60, 115 or 315 micron bias cut nylon mesh

Note: 316 marine grade stainless steel is an option for all RF200 filters

Ordering



Rotorflush RF400AR Self-cleaning Filter - up to 1000 litres per minute

Rotorflush Filter Model No	Price £ (GBP - exc. VAT)
RF400A nylon mesh 60, 115 and 300 micron	£2,027.00 (GBP)
RF400AR Sintered stainless steel top mesh, 50,100 & 315 micron	£2,827.00 (GBP)
RF400AR Stainless steel 1 mm or 2mm woven mesh	£2,270.00 (GBP)
RF400R 3mm or 6mm perforated mesh	£1,911.00 (GBP)

60, 115 or 315 micron bias cut nylon mesh is available and 50, 115 and 300 sintered stainless steel mesh

Standard fittings are 3 inch BSP outlet, and 1½ inch BSP inlet to the backwash.

If NPT connections are required please state when ordering and we can fit adaptors.

Please note:

Delivery is by carrier and is usually between 5 and 7 days from order depending on product and availability.

Carriage and packing charges are extra.

Can't find what you need? Want to talk with us directly?

We're here to help. Call us on +44(0) 1297 560229